

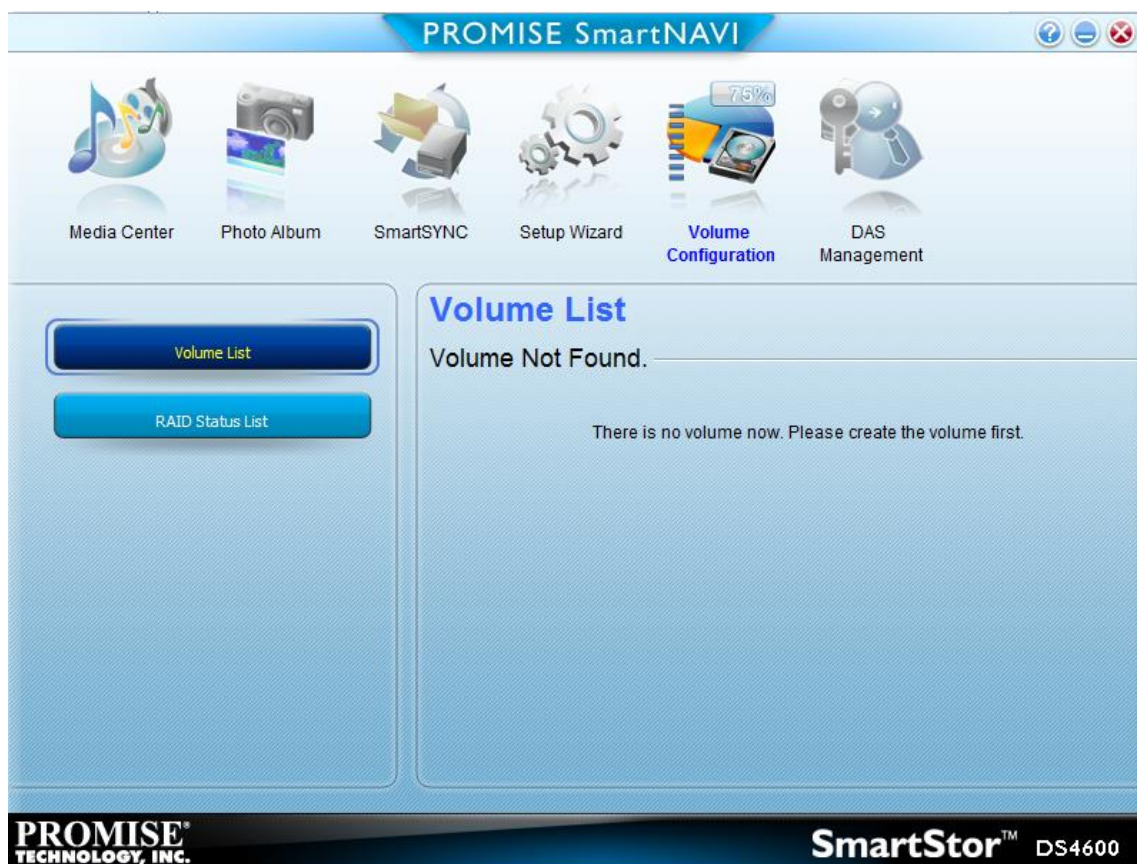
DS4600 can be seen within SmartNAVI



Event Log shows original RAID creation followed by Volume creation on 09.05.2016



However, there is no Volume found in the Volume list.



Despite the raid Config apparently being OK?



I even tried pulling a couple of disks to make the RID Volume recreate itself. But the Volume is still not visible.

The screenshot displays the PROMISE SmartNAVI utility window. At the top, the title bar reads "PROMISE SmartNAVI". Below the title bar, there are six icons representing different functions: Media Center, Photo Album, SmartSYNC, Setup Wizard, Volume Configuration, and DAS Management. The DAS Management icon is highlighted in blue. On the left side, there is a vertical menu with buttons for System Information, Event Log (highlighted), Mail Setting, Upgrade Firmware, Setting, and Shutdown. The main area on the right is titled "Event Log" and contains an "Event Log List" table. The table has three columns: Date/Time, Level, and Message. The log entries show a sequence of events related to a RAID volume, including a rebuild completion, a DAS disconnection, a disk being plugged in, a RAID going critical, a rebuild starting on Disk 1, a disk being unplugged, a RAID going offline, and the volume and RAID being created.

Date/Time	Level	Message
2016-11-08 16:41:14	Information	Rebuild completed.
2016-11-08 16:23:25	Error	DAS disconnected
2016-11-08 14:06:40	Information	Disk 2 plugged in
2016-11-08 14:06:40	Warning	RAID goes critical
2016-11-08 14:06:40	Information	Rebuild started on Disk 1.
2016-11-08 14:04:10	Warning	Disk 2 unplugged
2016-11-08 14:04:10	Error	RAID goes offline.
2016-05-09 11:37:52	Information	Volume created
2016-05-09 11:36:21	Information	RAID created

PROMISE TECHNOLOGY, INC. SmartStor™ DS4600